

Figure 3

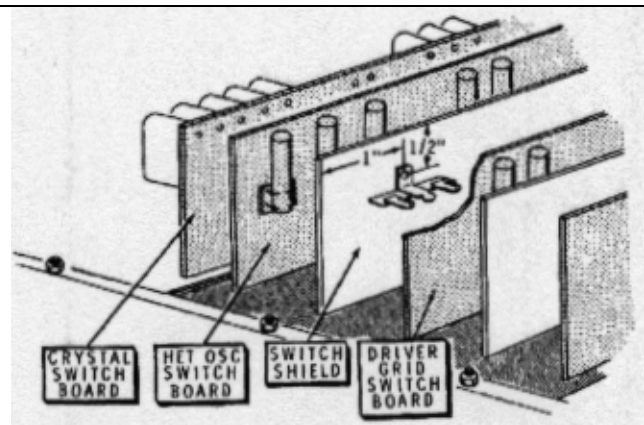


Figure 4

Refer to Figure 3 for the next two steps.

- ( ) Connect the cathode (banded) end of the 1N4149 diode to lug 2 of the 3-lug terminal strip (S-1). Connect the other lead to lug 1 of the terminal strip (NS).
- ( ) Connect the 1 MΩ (brown-black-green) resistor from lug 1 (NS) to lug 3 (NS) of the terminal strip.
- ( ) Coat the terminal strip foot with solder.

- ( ) Refer to Figure 4 and solder the 3-lug terminal strip directly to the rear side (driver grid switch board side) of the front switch shield. Follow the dimensions given. Melt some solder on the switch shield at the point to which the terminal strip will be mounted. Then remelt the solder and hold the terminal strip foot snugly against the switch shield until the solder cools.
- ( ) Connect the free lead of the 3.3 pF disc capacitor to lug 1 of the terminal strip (NS).

